

# Phasendiagramme

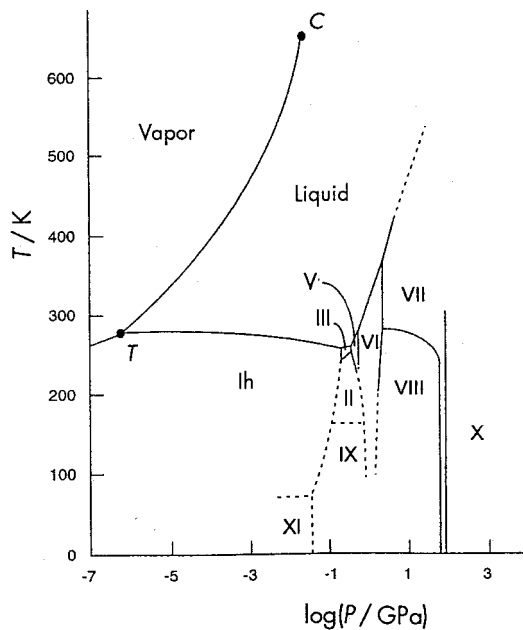


Fig. 1: Phase diagram for the  $\text{H}_2\text{O}$  illustrating extensive polymorphism at high pressure. Ices IV and XII are metastable phases and do not appear on this diagram; stability fields for ices II, IX and XI are not currently well defined and are shown as dashed lines.

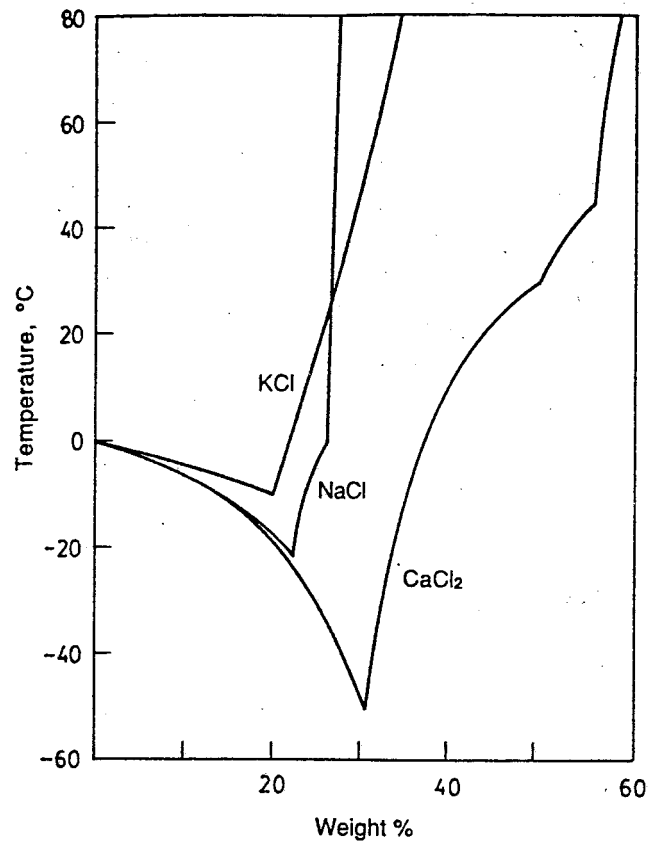


Figure 7. Freezing point and solubility curves for three road deicing compounds. The solids in equilibrium with saturated solution are  $\text{KCl}$ ;  $\text{NaCl} \cdot 2\text{H}_2\text{O}$  and  $\text{NaCl}$ ;  $\text{CaCl}_2 \cdot 6\text{H}_2\text{O}$ ,  $\text{CaCl}_2 \cdot 4\text{H}_2\text{O}$ , and  $\text{CaCl}_2 \cdot 2\text{H}_2\text{O}$ ; proceeding from the respective eutectic points.

J. Chem. Educ. 77 June 2000 p 720

J. Chem. Educ. 70 Aug. 1993 p. 619

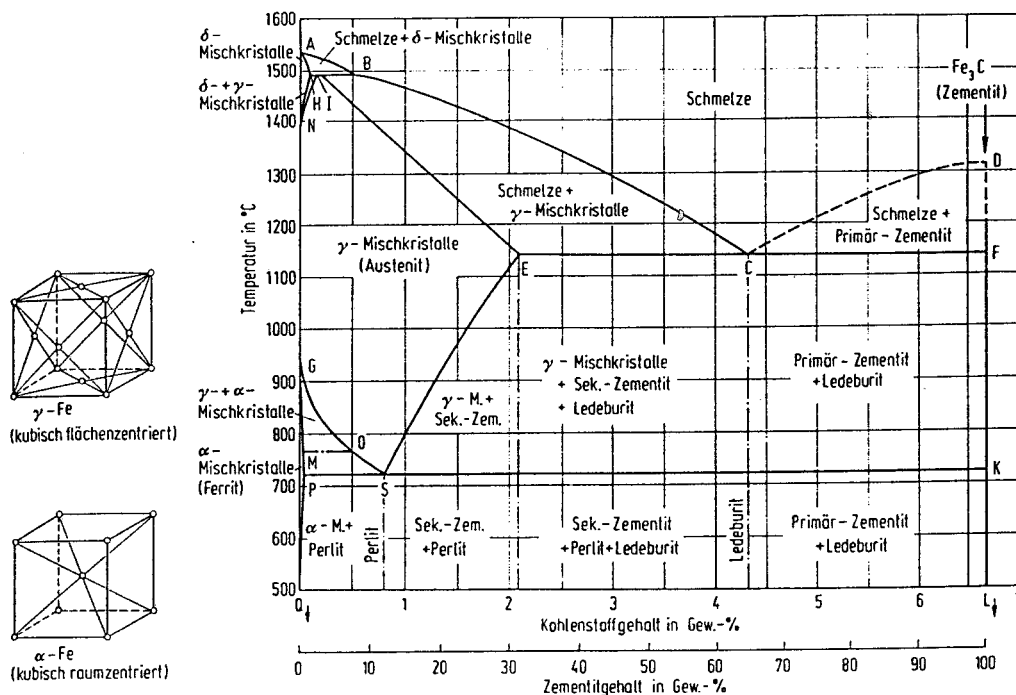


Fig. 2 aus "Taschenbuch für den Maschinenbau", Dubbel, 17. Auflage, 1990